

Luxury life style

WOODSIDE
Seetha Sadan
Premium Satvik Residence

2, 3 & 4 BHK Premium Apartments at Chamarajpet

Project By:

WOODSIDE
BUILDERS



Project By:

WOODSIDE
BUILDERS



vastu
Compliant

WOODSIDE
BUILDERS
SEETHA SADAN



“Woodside Seetha Sadan” is one of the most valuable projects by **Woodside Builders**, located at Chamarajpet It's a project with perfect proposition of quality, technology & comfort. It's our pleasure to welcome you to **“Woodside Seetha Sadan”**, where a Super Luxury Spacious range of 2,3 & 4 BHK apartments awaits to grant you ownership of a whole new residential address

“Woodside Seetha Sadan” offers an elegant, modern designed with Vaastu compliant Apartments.

“Woodside Seetha Sadan” offers complete, comfortable and joyful life crafted for all age group. Experience the serene neighborhood, stay close to workplaces which enables stress free commuting. A short drive and you will find everything within your reach. From malls to cinema halls, from schools to offices from entertainment to eat outs and health centers.

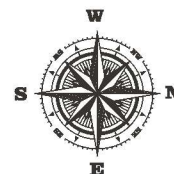
Chamarajpet is one of the oldest areas in Bengaluru, 2.9 km. from Bangalore City Railway Station and Ramakrishna Ashram The main commercial street of Chamrajpet is the Bazar Street, the continuation of which is Bull Temple Road.

There's something for everyone here. The attention to detail and the finest selection of fittings and finishing makes life at

“Woodside Seetha Sadan” Premium.

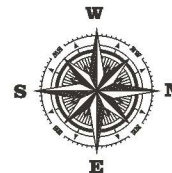
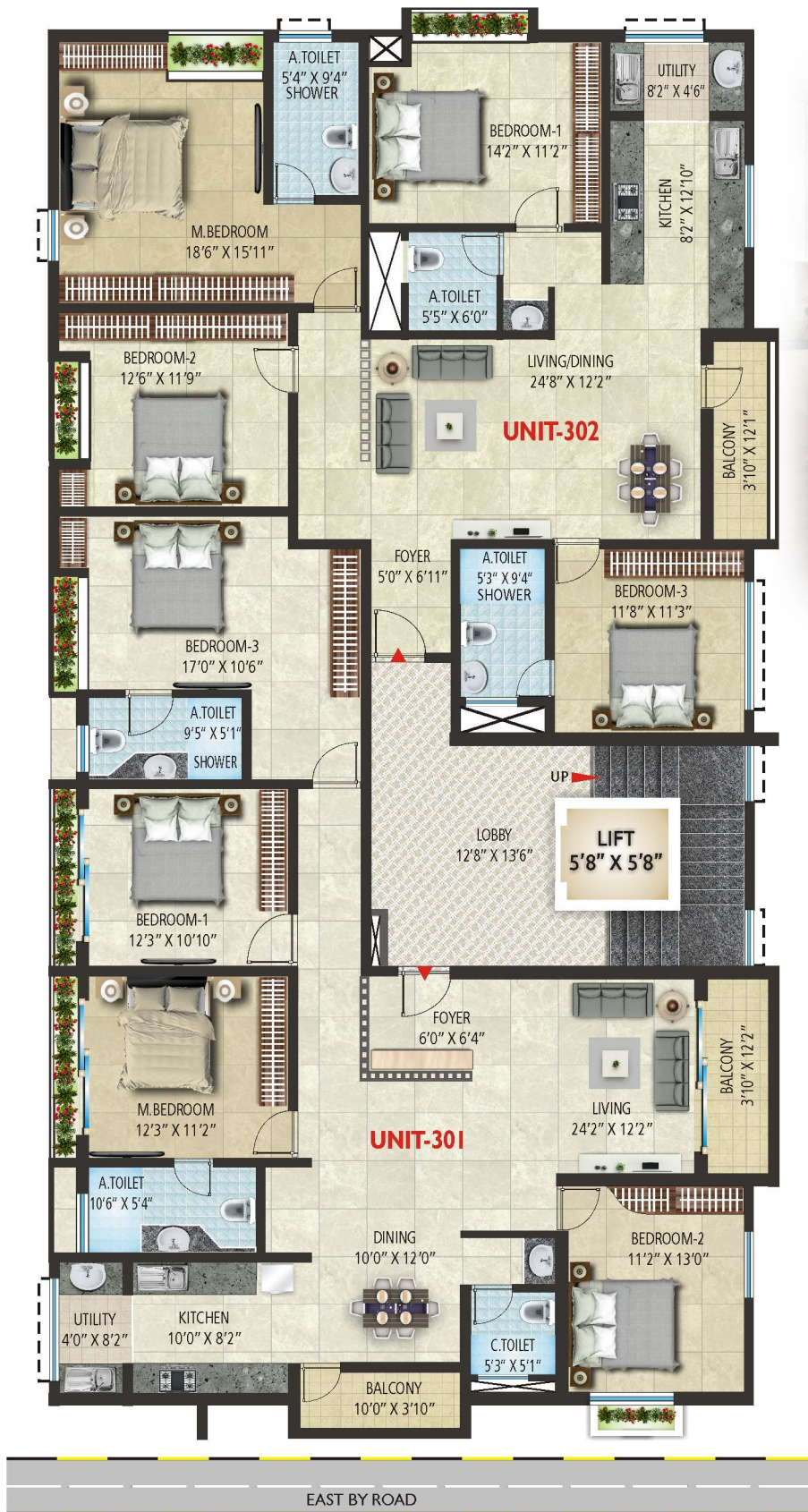
GROUND & FIRST FLOOR PLAN

WOODSIDE
Seetha Sadan



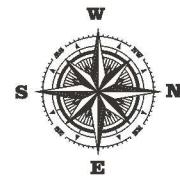
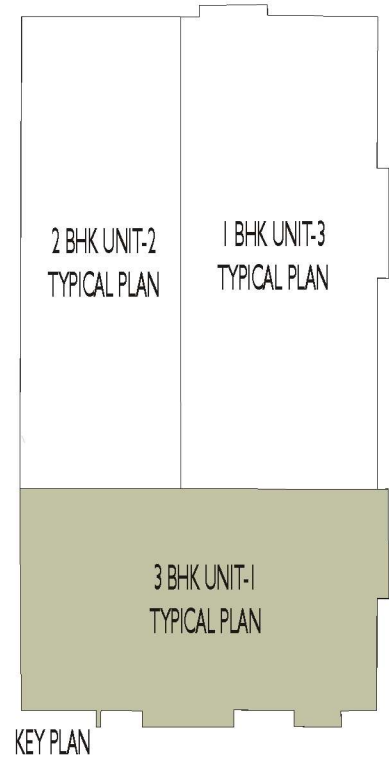
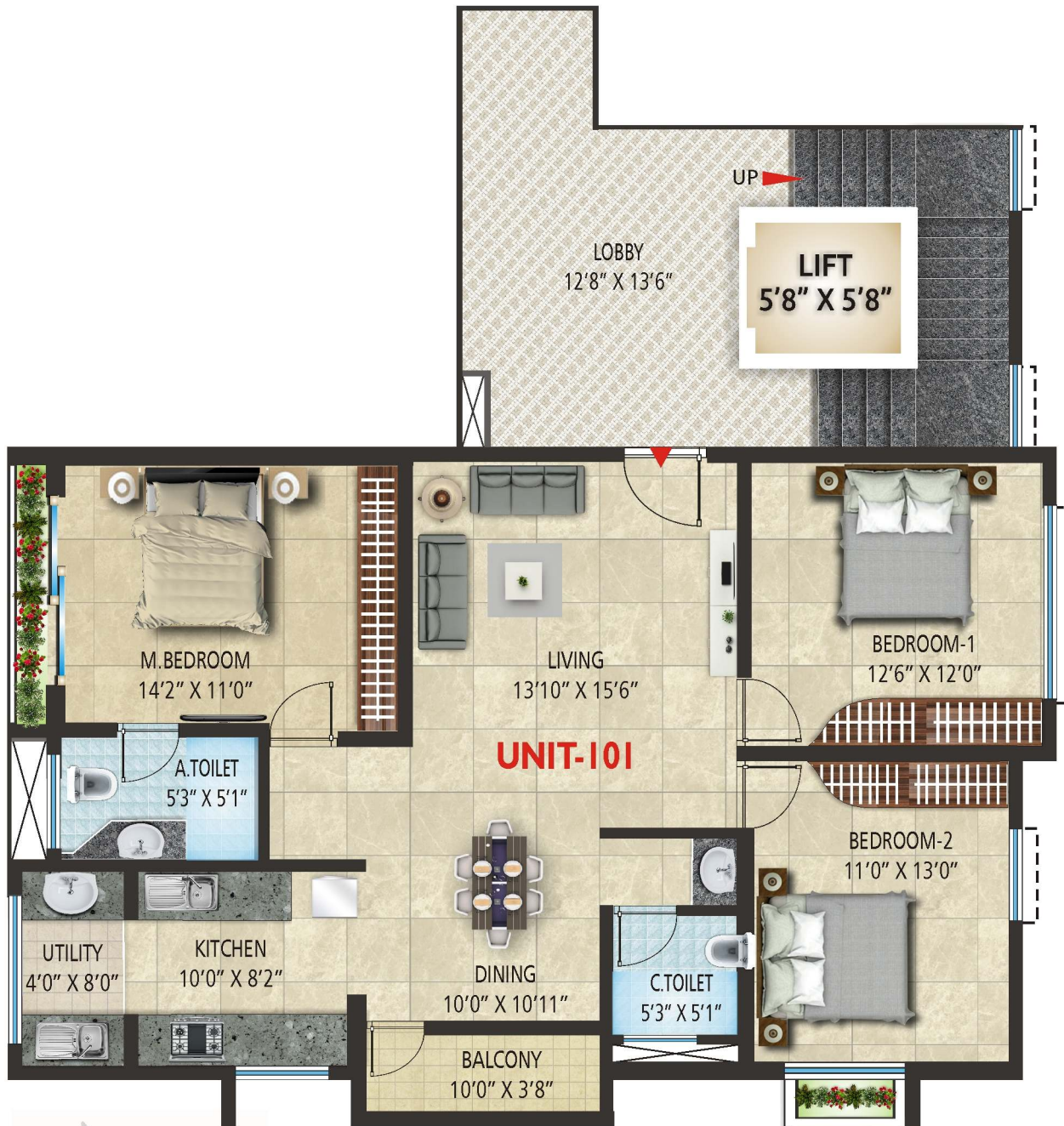
SECOND, THIRD & FOURTH FLOOR PLAN

WOODSIDE
Seetha Sadan



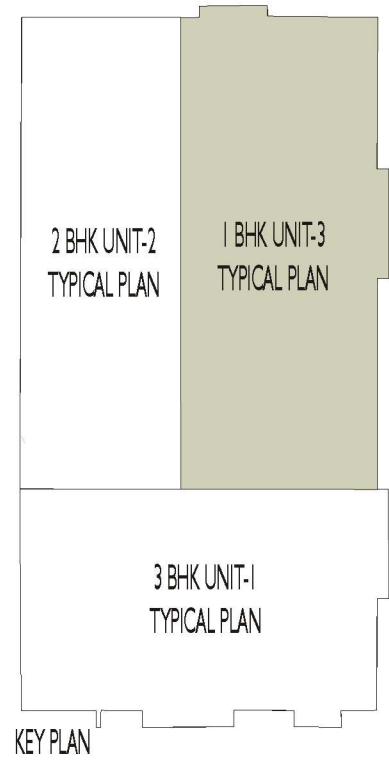
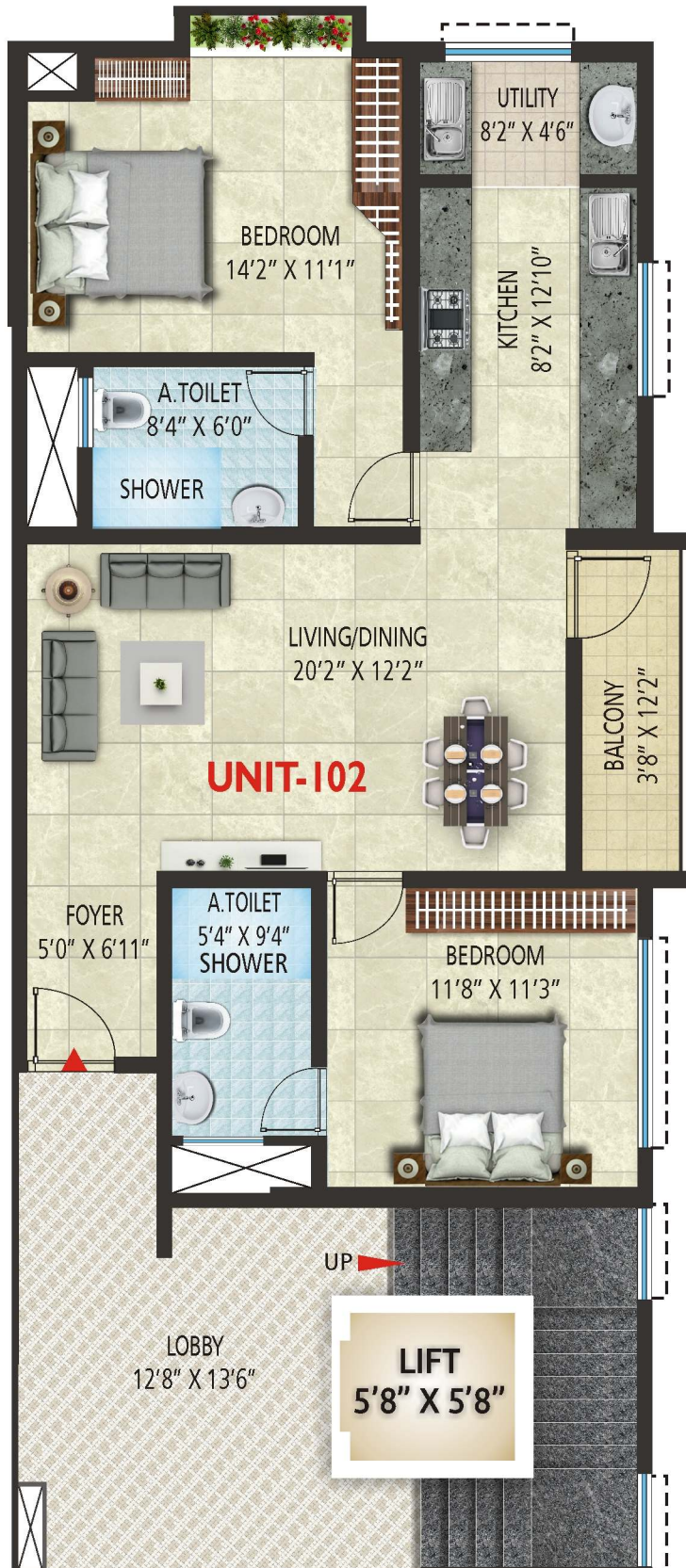
101 | 3 BHK | 1420 sft | WEST FACING

WOODSIDE
Seetha Sadan



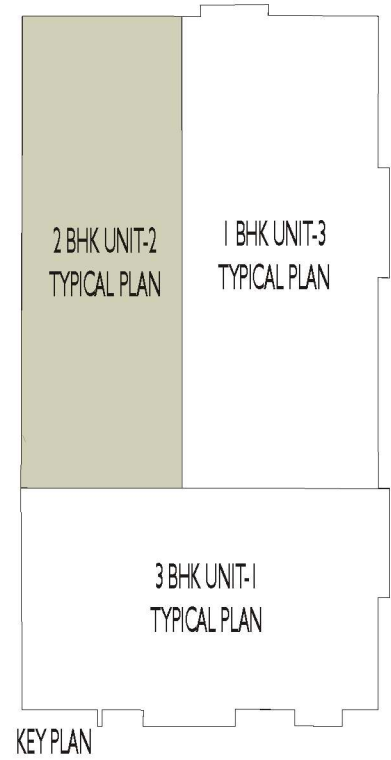
103 | 2 BHK | 1190 sft | EAST FACING

WOODSIDE
Seetha Sadan

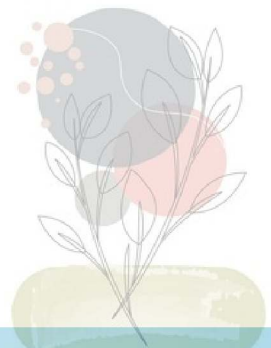
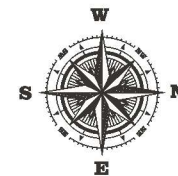
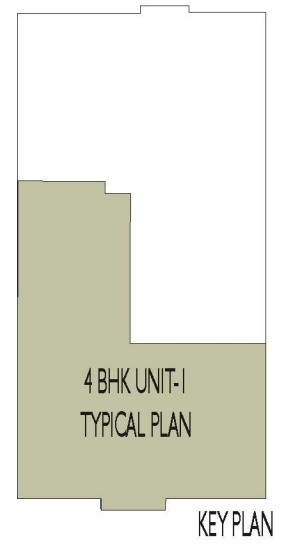


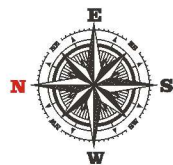
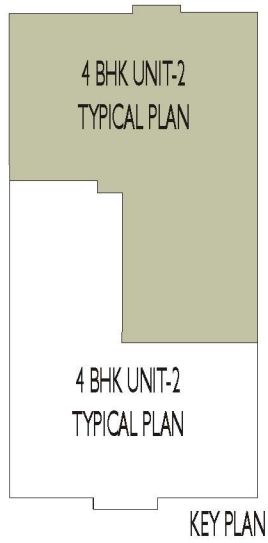
102 | 2 BHK | 1310 sft | NORTH FACING

WOODSIDE
Seetha Sadan



301 | 4 BHK | 2045 sft | WEST FACING



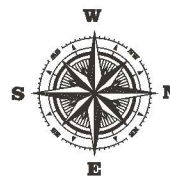


TERRACE FLOOR PLAN

WOODSIDE
Seetha Sadan



Woodside Seetha Sadan is the perfect place to relax which is feature-packed and made exclusively for you. Apart from the Multipurpose Space, the facilities at Woodside Seetha Sadan include a premium Gym to de-stress. The mantra for a good life is all here!



WOODSIDE
Seetha Sadan

Lifeline comforts for lifestyle living..



W
WOODSIDE
BUILERS
SEETHA SADAN

Premium Home for lifestyle living..
Vastu Traditions Blend with Architectural Technology



WOODSIDE
Seetha Sadan

Lifeline comforts for lifestyle living..

“Woodside Builders” Proudly Launches one of the luxurious projects **“Woodside Seetha Sadan”** that offers 2, 3 & 4 bedroom apartments with sizes **1190 to 2045** Sq Ft. And is well connected to all parts of Bangalore. The project contains Modern amenities. **“ Woodside Seetha Sadan”** aims to provide you a well desired life of luxury.

Structure :

- RCC frame structure with solid concrete block masonry walls

Flooring :

- Premium vitrified tiles for Living, Dining, Kitchen & open areas
- Wooden flooring for Bedrooms
- Anti-skid vitrified tiles for Balconies

Utility :

- Covered utility with window
- Antiskid Vitrified tiles flooring & glazed tile dadoo for walls
- Provision for washing machine & vessel washing

Doors & Windows :

- Main Door: Polished Teak wood frame with both side teak veneer shutter
- Other Doors: Veneer shutter with hardwood frame
- UPVC 3 track sliding windows with mosquito mesh

Painting :

- Acrylic emulsion paint

Kitchen :

- 20 mm thick black polished granite platform with Caryl Sink
- 2 feet tile dadoo above granite platform
- Provision for water purifier and water heater

Water Supply :

Borewell or BWSSB

Toilets:

- Ceramic tiles flooring & glazed tile dadoo for walls
- Grohe / Kohler or equivalent chromium plated fittings
- Duravit / Kohler/ American standard or equivalent sanitary fixtures

Lift:

- Kone / Johnson or equivalent make

Electrical :

- BESCOM power supply with individual meters
- Concealed copper wiring with circuit breakers for safety
- Modular switches with 5 & 15 amp points as per Consultant design
- DG Power back-up for entire flat

Common Areas :

Granite flooring for lobby

SPECIFICATIONS

WOODSIDE Seetha Sadan



PROJECT HIGHLIGHTS



Multipurpose Space
& Terrace Gazebo



Gym



CCTV
Surveillance



Rain Water
Harvesting



DG Power
Backup



Intercom
Facility



Lift



Borewell/
BWSSB

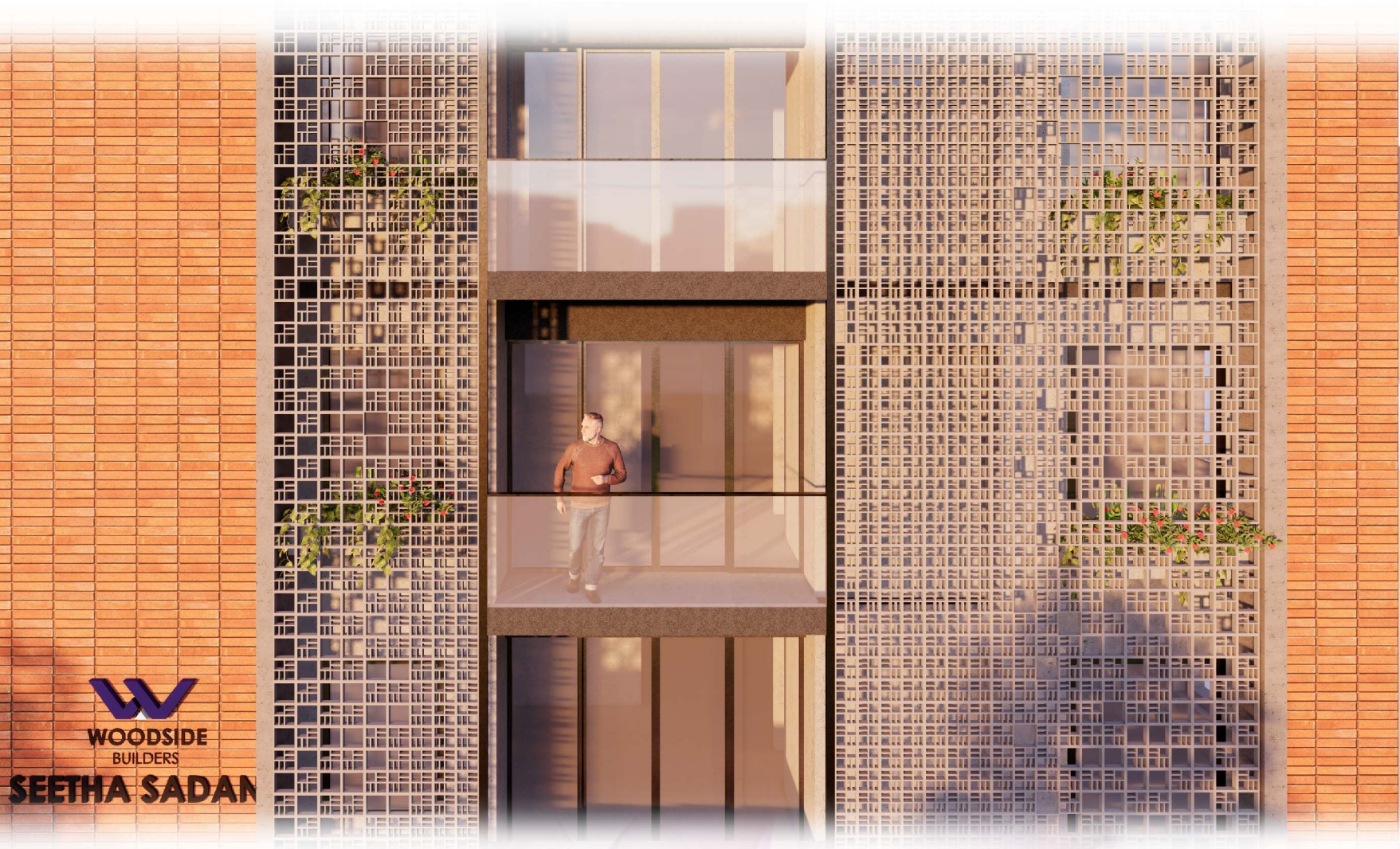



Car
Parking



24 Hrs
Security

With Woodside Builders experience your life,
living to the fullest and spending quality time with your loved one's.
We understand your family's needs and design spaces for you.




WOODSIDE
BUILDERS
SEETHA SADAN

WOODSIDE
Seetha Sadan

Lifeline comforts for lifestyle living..

The location is selected to make it convenient to lead a soothing life. The Project situated in the middle of the Prime Located south Bangalore. **“Woodside Seetha Sadan”** a rare opportunity to own a spacious home at Chamarajpet Uniquely designed with at most attention to natural light, comfortable living along with highest quality of construction, Planned to perfection. **“Woodside Seetha Sadan”** adds unparalleled comfort to your life. Relax in lush green spaces, workout at the gym, enjoy a lazy Sunday.



We are one of Bengaluru's premier property developers, with over 12 years of experience in the construction Industries, having delivered several commercial and residential projects successfully. We create high-quality homes and commercial spaces with cutting-edge technology, making a positive difference in people's lives.

Under the able leadership and guidance of **Bharath Eswar K**, the Managing Partner, our passionate team of visionary architects, talented engineers, and designers strive their utmost to create spaces that stand the test of time. Over the years, we have transformed challenging and complex sites into beautiful, sustainable spaces, exceeding our customers' expectations.

We are staunch believers in honesty and transparency in all our dealings with our customers. Our strong points are the excellent workmanship and the high-quality finishing in all the projects we undertake. We have maintained these timeless values over all these years to build a better life for our customers through our premium quality development.

We believe in continuous innovation and always strive to push our boundaries to achieve the highest standards. Our vision is to keep creating spaces where our customers can fulfill their dreams and create cherishable memories.



Corporate Office @ :

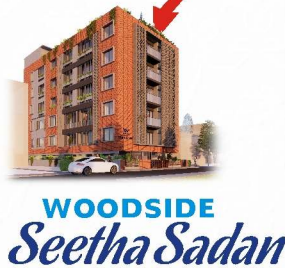
2nd floor, 188/32/1, Bhashyam circle,
13th cross, Sadashivnagar,
Bangalore 560080



Project @ :

Woodside Seetha Sadan

GV Ramachar Road, 6th Cross,
Chamarajpet, Bangalore



+91 805 006 4004



email: info@woodsidebuilders.in



www.woodsidebuilders.in

